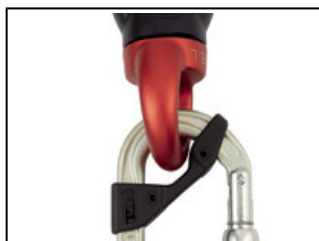


Universe	Professional
Type	Verticality
Category	Connectors
Subcategory	High strength carabiners

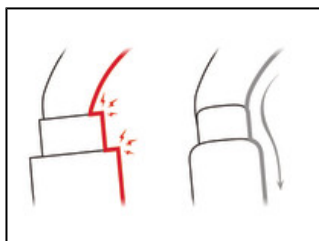


## OXAN

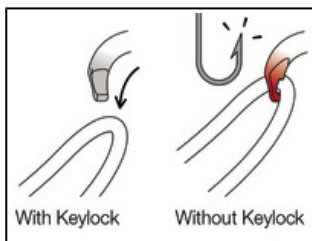
OXAN is a high-strength steel carabiner designed for use in difficult environments. The oval, symmetrical shape allows optimal loading of the carabiner when setting up anchors or connecting to metal structures. It is available in two locking systems: automatic TRIACT-LOCK system or manual SCREW-LOCK system. OXAN TRIACT-LOCK is available in European or international versions. OXAN can be connected to the CAPTIV bar to favor positioning of the carabiner along the major axis, to limit the risk of it flipping and to keep it integrated with the device.



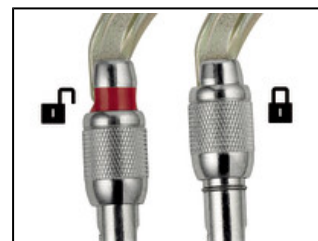
The oval and symmetrical shape allows optimal positioning of the carabiner. The CAPTIV positioning bar promotes loading of the carabiner along the major axis, reduces the risk of rotation and keeps it integrated with the device.



Fluid interior design of OXAN carabiners limits the risk of having a catch point and facilitates rotation of the carabiner.



To ensure optimal efficiency, OXAN carabiners use the Keylock system: the body/gate interface does not have a hook that could snag on anchors, ropes, harness equipment loops...



To facilitate equipment checks, SCREW-LOCK manual locking carabiners have a red band that is visible only when the carabiner is not locked.

---

**Short Description** High-strength oval carabiner

---

**Selling Points**





- High-strength steel carabiner for use in harsh environments, particularly suitable for setting up anchors or for connecting to metal structures
- Oval symmetrical shape allows optimal positioning of the carabiner
- May be used with a CAPTIV positioning bar to favor loading of the carabiner along the major axis, to keep it integrated with the device, and to limit the risk of it flipping
- Easier handling:
  - fluid interior design limits the risk of having a catch point and facilitates rotation of the carabiner
  - Keylock system to avoid any involuntary snagging of the carabiner
- H cross-section:
  - ensures an optimal strength/weight ratio
  - protects markings from abrasion
- Two locking systems available:
  - TRIACT-LOCK: automatic locking with triple-action gate opening
  - SCREW-LOCK: the manual screw-lock with red band provides a visual warning when the carabiner is unlocked
- Available in European or international versions
- Also available in black


---

**Specification** • Material(s): steel

---

## Specifications by reference

Reference(s)	M72A TL	M72A SL	M72A TLA	M72A TLN
				
Locking system	TRIACT-LOCK	SCREW-LOCK	TRIACT-LOCK	TRIACT-LOCK
Certification(s)	CE EN 362, NFPA 2500 Technical Use, EAC, UKCA, GB/T 23469-2009 XF 494-2004	CE EN 362, NFPA 2500 Technical Use, EAC, UKCA, GB/T 23469-2009 XF 494-2004	CE EN 362, ANSI Z359.12, NFPA 2500 Technical Use, CSA Z259.12, EAC, UKCA	CE EN 362, ANSI Z359.12, NFPA 2500 Technical Use, CSA Z259.12, EAC, UKCA
Color(s)	gold	gold	gold	black
Major axis strength	38 kN	38 kN	38 kN	38 kN
Minor axis strength	16 kN	16 kN	16 kN	16 kN
Open gate strength	15 kN	15 kN	15 kN	15 kN
Gate opening	22 mm	22 mm	20 mm	20 mm
Weight	195 g	185 g	230 g	230 g
Made in	TW	TW	TW	TW
Guarantee	3 years	3 years	3 years	3 years
Inner Pack Count	1	1	1	1
Quantity Per Box	25	25	25	25
EAN	3342540815919	3342540815896	3342540815926	3342540815933

Reference(s)	M72A SLN
	
Locking system	SCREW-LOCK
Certification(s)	CE EN 362, NFPA 2500 Technical Use, EAC, UKCA, GB/T 23469-2009 XF 494-2004
Color(s)	black
Major axis strength	38 kN
Minor axis strength	16 kN
Open gate strength	15 kN
Gate opening	22 mm
Weight	185 g
Made in	TW
Guarantee	3 years
Inner Pack Count	1
Quantity Per Box	25
EAN	3342540815902

---

**Accessory(ies)**      CAPTIV

---

**Related product(s)**      PAW  
CONNEXION FIXE  
CONNEXION VARIO  
CONNEXION FAST  
SWIVEL